



Spotlight on Innovative Mapping & Data Tools

2017 ASFPM National Conference

May 3, 2017

Nick Shufro, Assistant Administrator, Federal Insurance & Mitigation Administration



FEMA

Risk Management



Engage and provide actionable information to empower and motivate communities to own their evolving risk

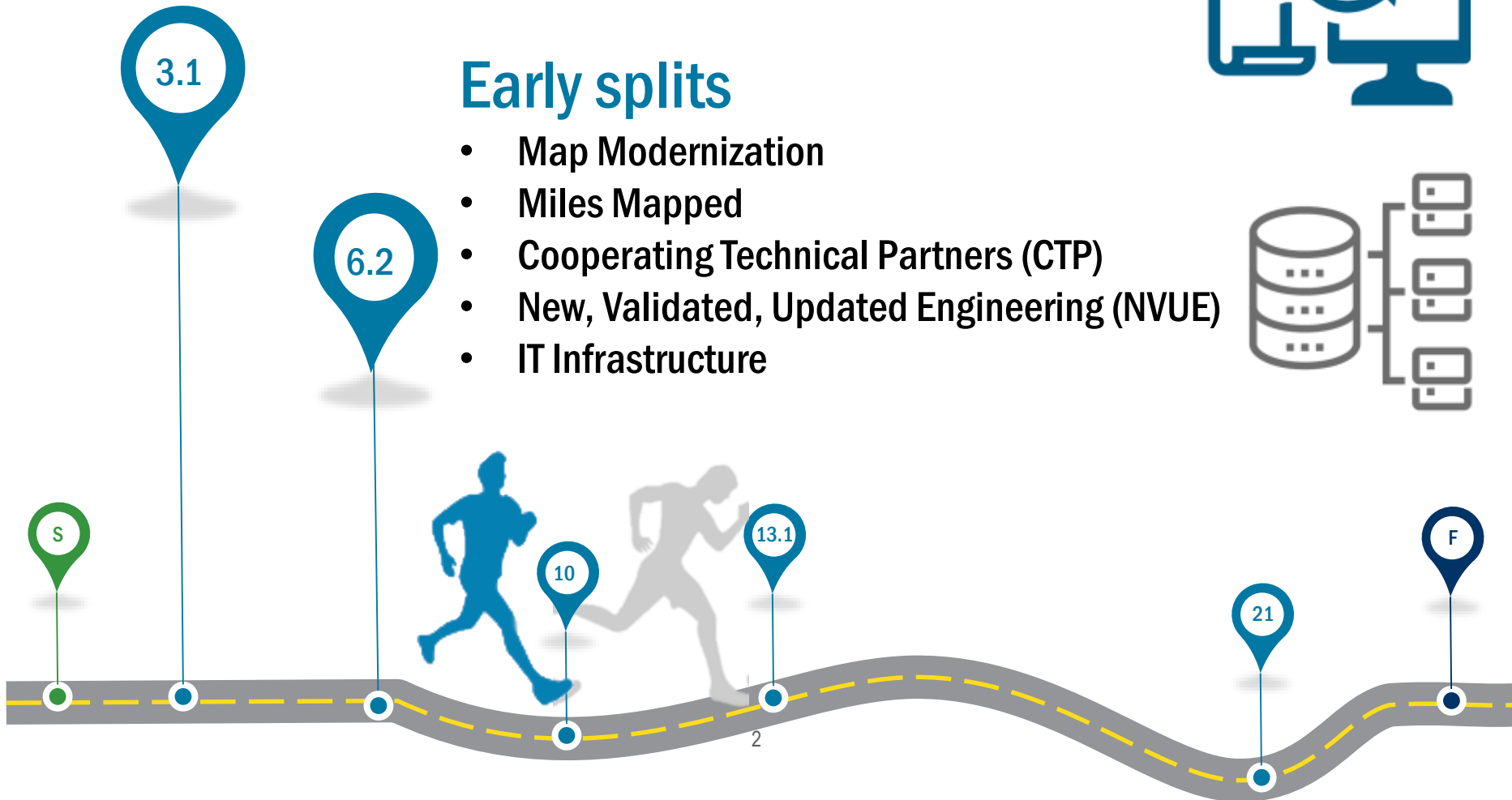
Early on in the race....

Notional- Not intended to depict a prioritization



Early splits

- Map Modernization
- Miles Mapped
- Cooperating Technical Partners (CTP)
- New, Validated, Updated Engineering (NVUE)
- IT Infrastructure



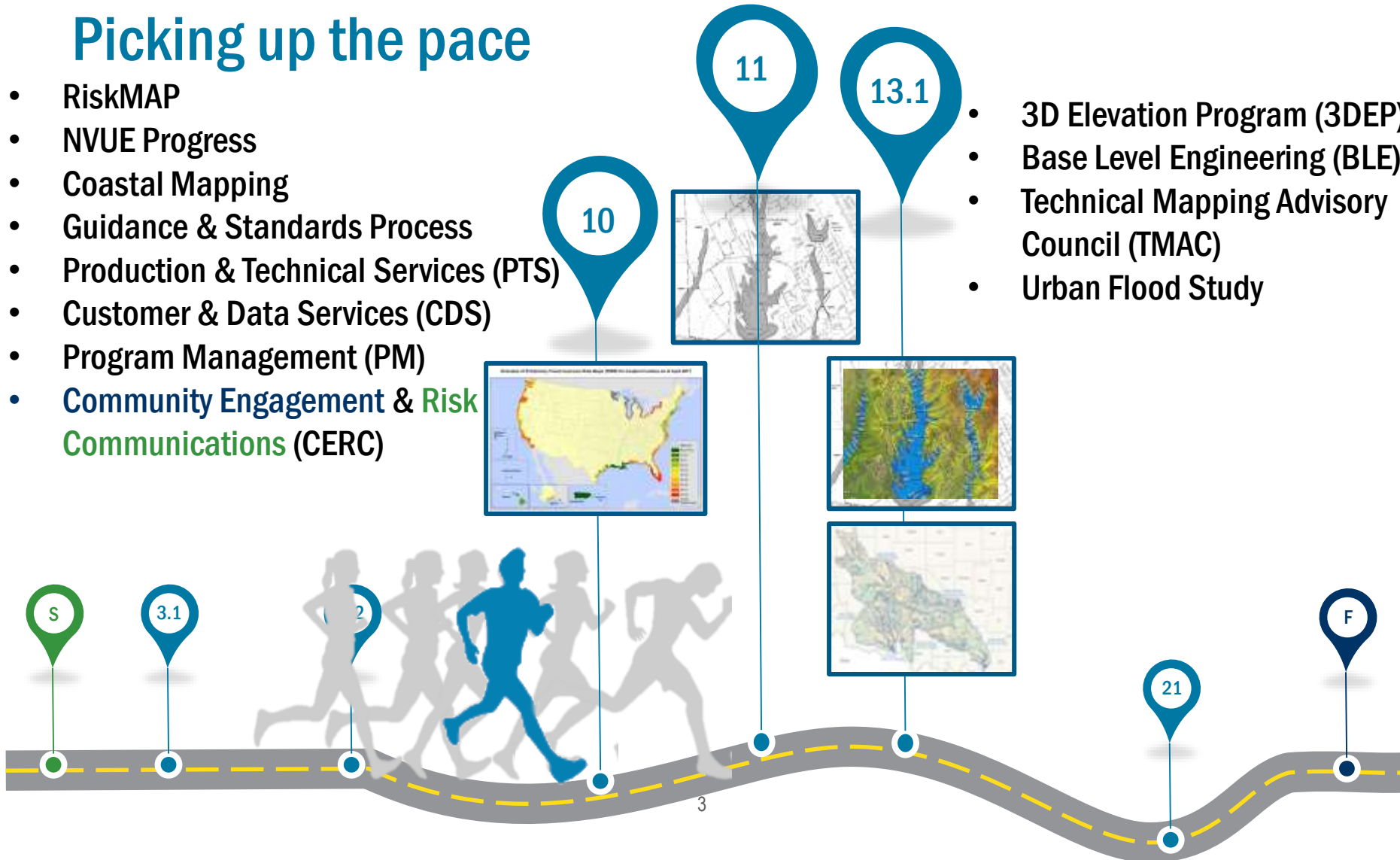
We're making great progress

Notional- Not intended to depict a prioritization

Picking up the pace

- RiskMAP
- NVUE Progress
- Coastal Mapping
- Guidance & Standards Process
- Production & Technical Services (PTS)
- Customer & Data Services (CDS)
- Program Management (PM)
- Community Engagement & Risk Communications (CERC)

- 3D Elevation Program (3DEP)
- Base Level Engineering (BLE)
- Technical Mapping Advisory Council (TMAC)
- Urban Flood Study

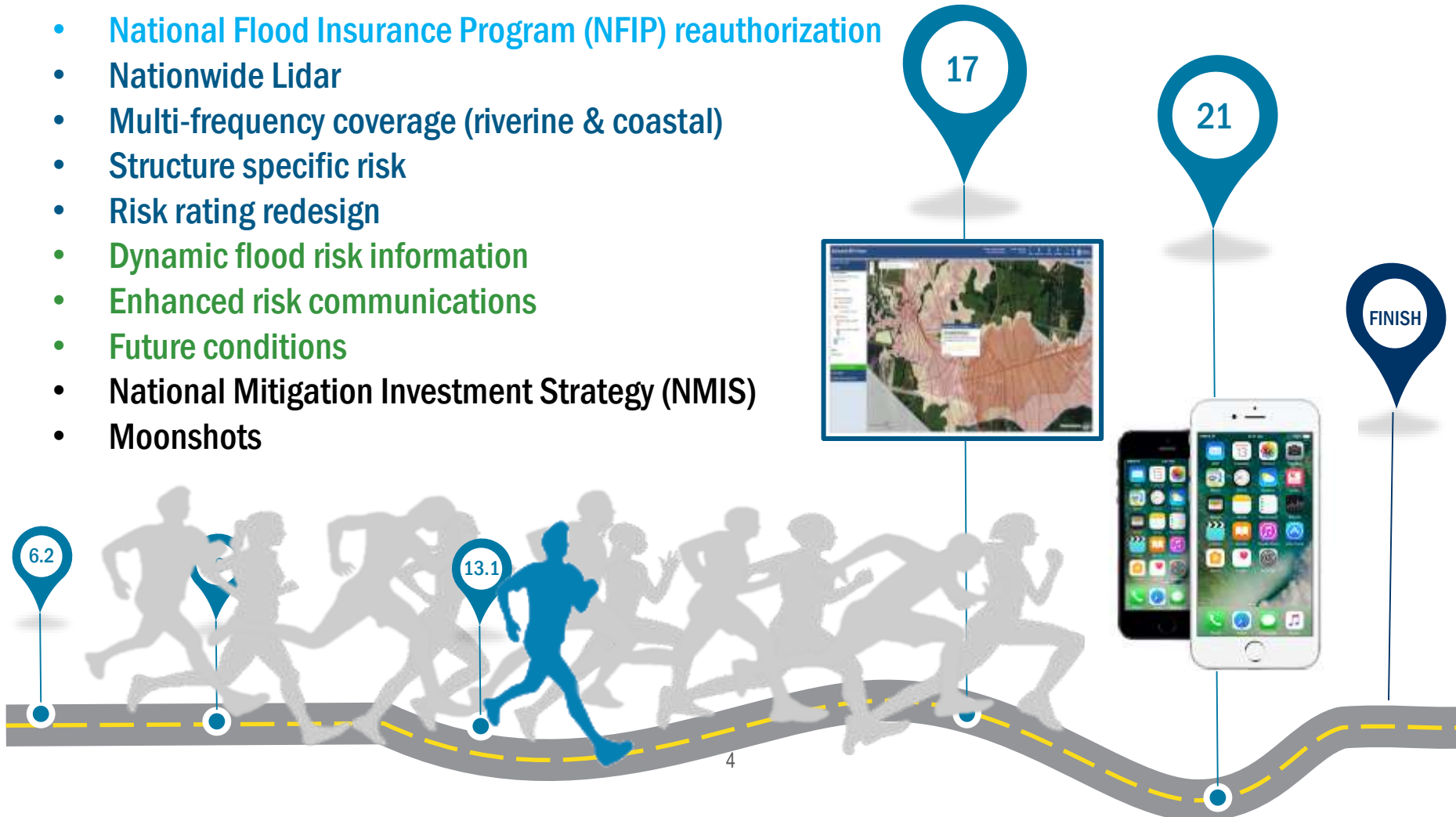


Looking Ahead

Notional - Not intended to depict a prioritization

Towards the Finish Line

- National Flood Insurance Program (NFIP) reauthorization
- Nationwide Lidar
- Multi-frequency coverage (riverine & coastal)
- Structure specific risk
- Risk rating redesign
- Dynamic flood risk information
- Enhanced risk communications
- Future conditions
- National Mitigation Investment Strategy (NMIS)
- Moonshots





We're Taking Moonshots!

Help us get there by visiting
www.surveymonkey.com/r/NFIPtothemoon



FEMA



FEMA