
Where Do We Go From Here?

Mark Osler

Senior Advisor for Coastal Inundation and Resilience

National Oceanic and Atmospheric Administration
U.S. Department of Commerce

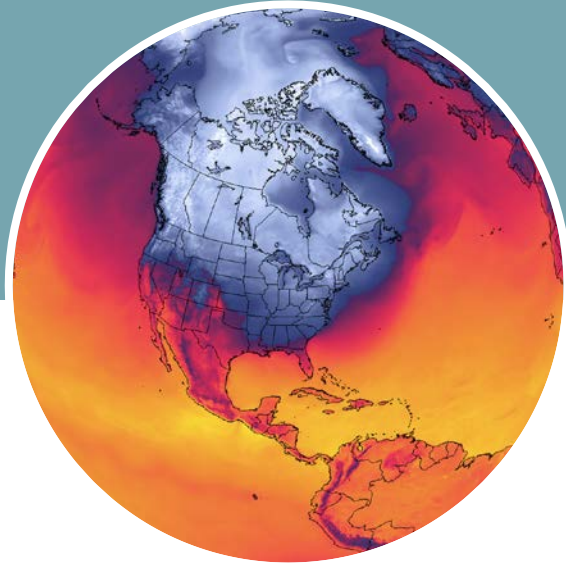
Association of State Floodplain Managers Annual National Conference
Building Resilience
May 21, 2019



Everyone Has a Role to Play



NOAA's Mission



Science.

To understand and predict changes in climate, weather, oceans, and coasts.



Service.

To share that knowledge and information with others.



Stewardship.

To conserve and manage coastal and marine ecosystems and resources.

An aerial photograph of a river delta, likely the Mississippi River, showing a complex network of waterways and a prominent levee system. The land is a mix of green and brown, indicating vegetation and agricultural fields. The water is a dark, deep blue. The overall scene is a vast, flat landscape with a clear boundary between the land and the water.

“

You hardly ever see the **river**, but the **levee** is always close by, a great green serpent running through woods, swamps, and farms, with towns nestling close to its slopes...**It was the principal human response** to the titanic power of the great river.

—Alan Lomax, *The Land Where the Blues Began*

”

Spring 2019 flood risk potential



Top 5 Riverine Flood Events From 2009 (CPI adjusted)

Date	Location	Deaths	Costs
August 2016	Louisiana Flooding	13	\$10.7 billion
April - May 2011	Mississippi River Flooding	7	\$3.4 billion
April 2016	Houston Flooding	8	\$2.9 billion
May 2015	Texas and Oklahoma Flooding and Severe Weather	31	\$2.7 billion
April 2010	East/ South Flooding and Severe Weather	32	\$2.7 billion

Top 5 Hurricane Events From 2009 (CPI adjusted)

Date	Location	Deaths	Costs
August 2017	Hurricane Harvey	89	\$128.8 billion
September 2017	Hurricane Maria	2,981	\$92.7 billion
October 2012	Sandy	159	\$72.8 billion
September 2017	Hurricane Irma	97	\$51.5 billion
October 2017	Hurricane Michael	49	\$25.2 billion

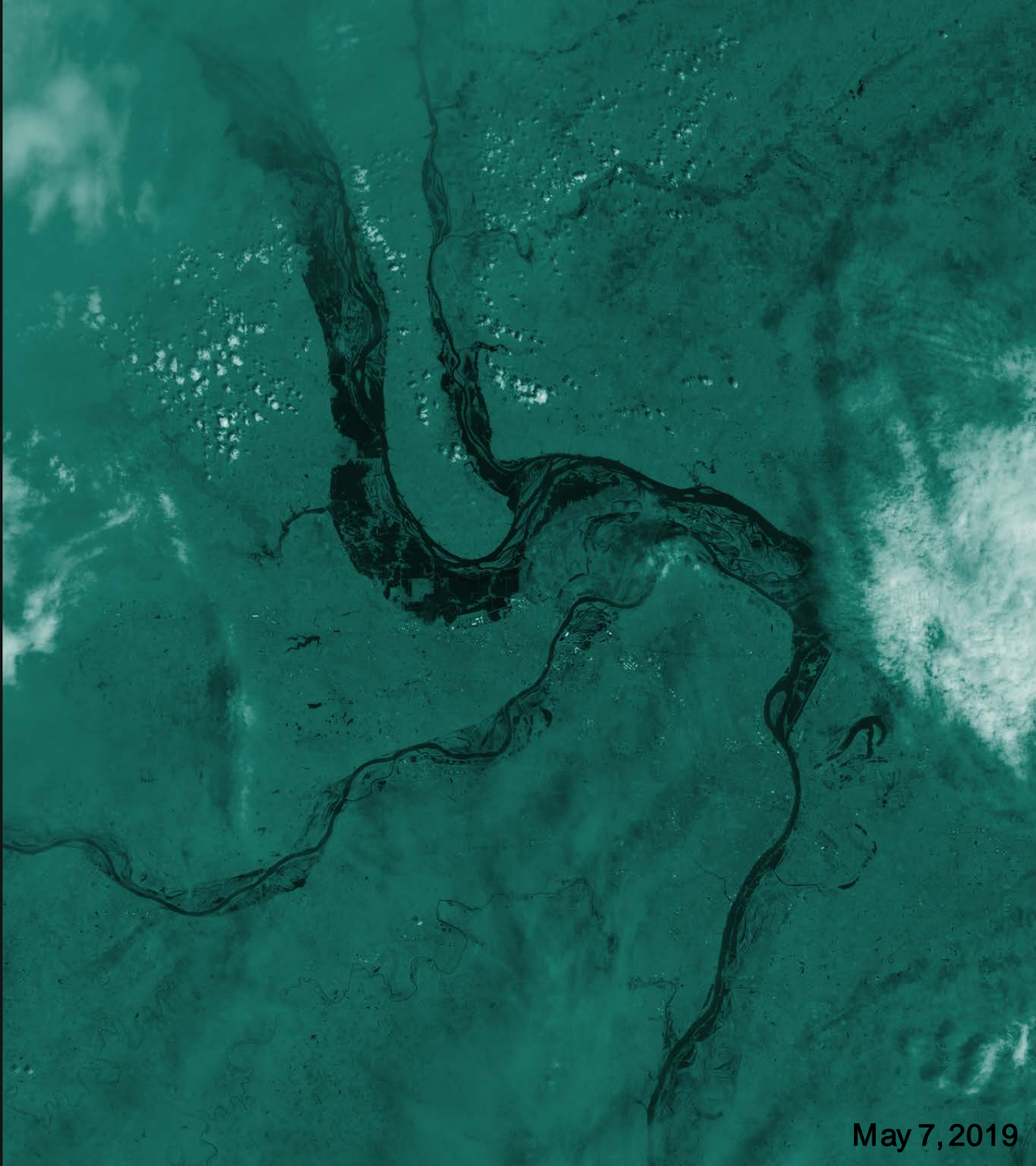
Top 5 Hurricane Events From 2006 - 2016 (CPI adjusted)

Date	Location	Deaths	Costs
October 2012	Sandy	159	\$72.8 billion
September 2008	Hurricane Ike	112	\$36 billion
August 2011	Hurricane Irene	45	\$15.5 billion
October 2016	Hurricane Matthew	49	\$10.7 billion
September 2008	Hurricane Gustav	53	\$7.2 billion

Current State of Play



June 5, 2018

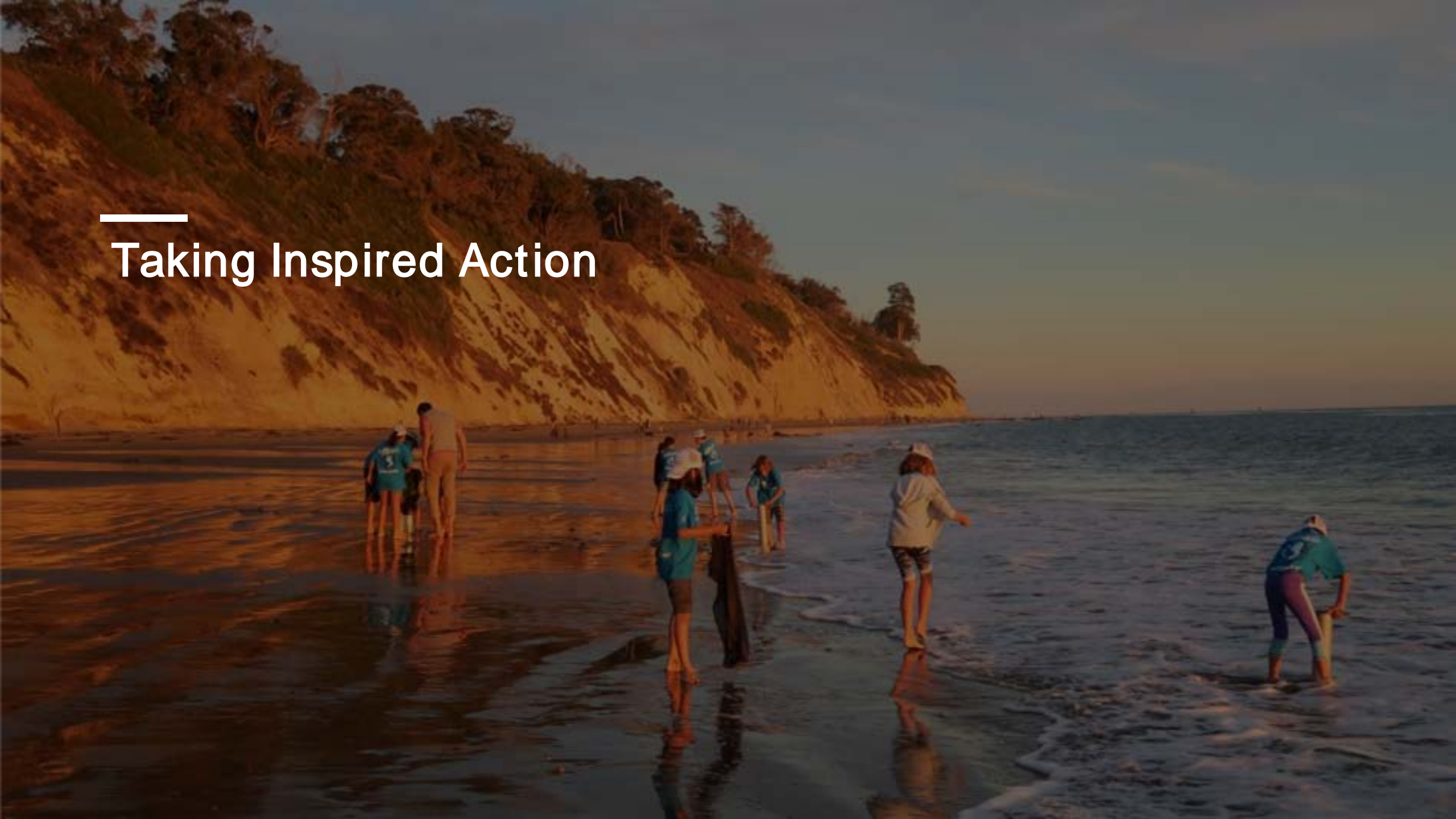


May 7, 2019

An aerial photograph showing a large-scale flooding event. In the foreground, a wide dam with multiple spillways is releasing a massive volume of water, creating turbulent, white foam. The water flows into a large reservoir. In the background, a town is almost entirely submerged in murky, brown floodwater. Only the tops of trees and some buildings are visible above the water level. A prominent long building with a red roof is partially submerged on the right side. The overall scene is one of significant environmental and human impact.

Here's What Keeps Me Up at Night

Taking Inspired Action





—
Thank You.

Mark Osler

Senior Advisor for Coastal Inundation and Resilience

301-713-3074

mark.osler@noaa.gov



**National Oceanic and
Atmospheric Administration**

U.S. Department of Commerce