



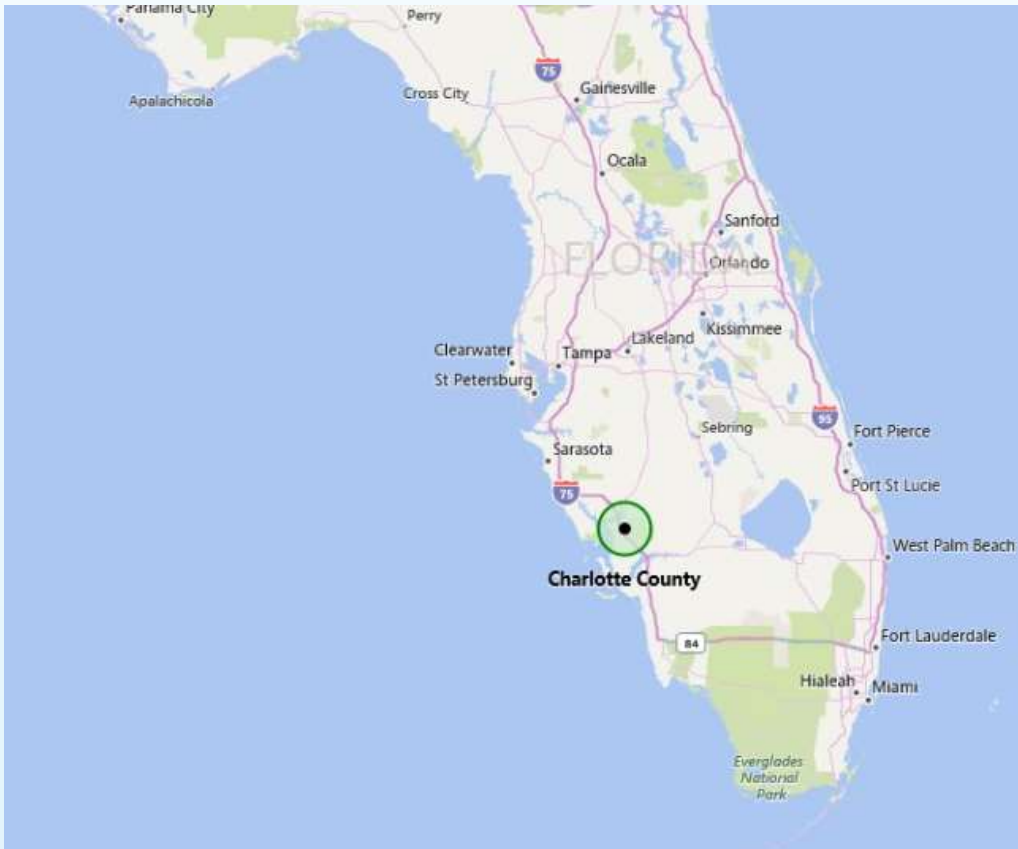
Charlotte County, Florida



**Risk MAP - Use the Data You
Already Have for a Better Result!.**



About Charlotte County



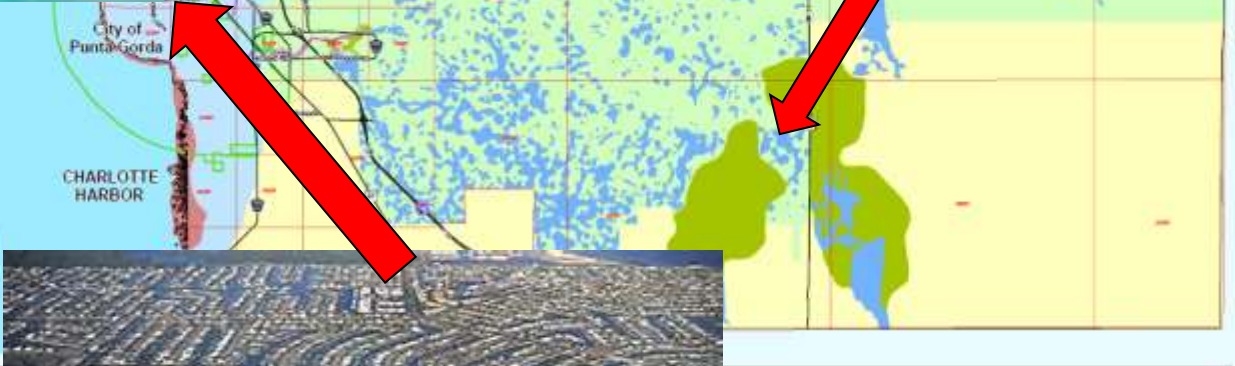
Southwest coast of Florida

650 Square Miles

165,000 population



Water, water everywhere!





Key facts and Figures

830

• Miles of coastline

44%

• Percentage of County in SFHA

60%

• Population living in the SFHA

35,148

• Flood Insurance Policies in force

\$8.7Billion

• Insurance in force



Our Risk MAP project

Kick-off 2013

Just provided comments on the Intermittent Data Submittal 2 report (IDS#2)

IDS #3 expected June 2017 with an update meeting with FEMA at the end of the summer

Work maps produced in the summer of 2018

Preliminary maps in spring of 2019



Approach to Risk MAP

Proactive rather than reactive

Collaborative

Verification of data via team of experts

Minimize challenges and appeals



What are we doing differently?

Identified that topographic data being used could be improved upon

Worked with project team to define the type of data that would be useful

Minimal funds to collect new data

Looked for creative solutions and data sources



Data sources

Elevation Certificates



Finished Floor Elevation

Adjacent grade

BFE when structure was built

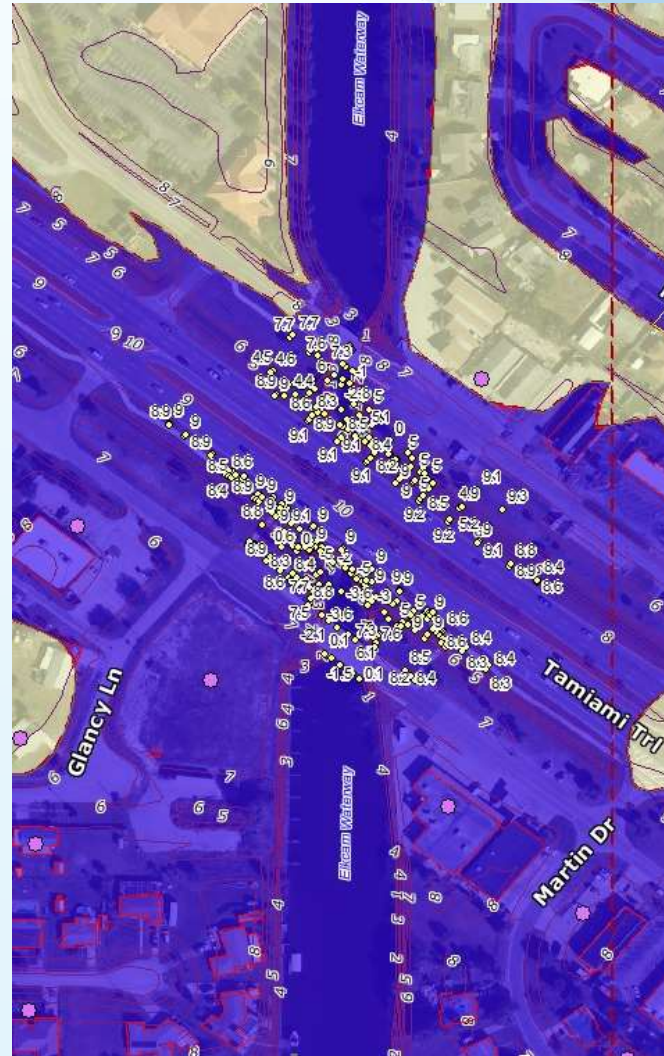
License Number of surveyor

PDF of the document



Data sources

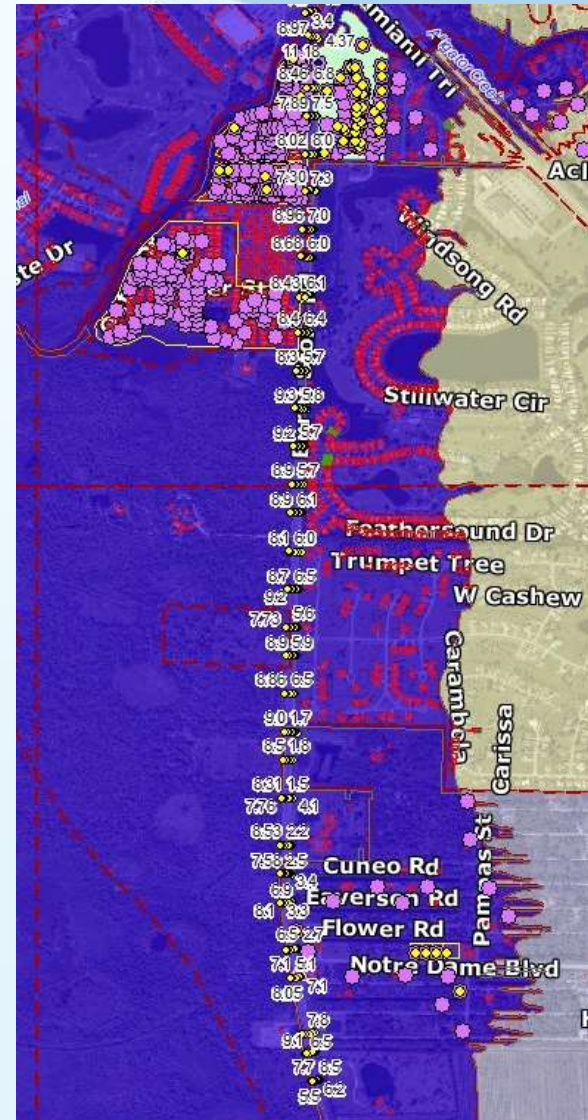
Stormwater
Projects





Data sources

Roads, Bridges
and Utility
projects





Data sources

Benchmarking Project





Keepers of the data

County and City Building Departments

County and City Public Works Departments

County and City Utilities Departments

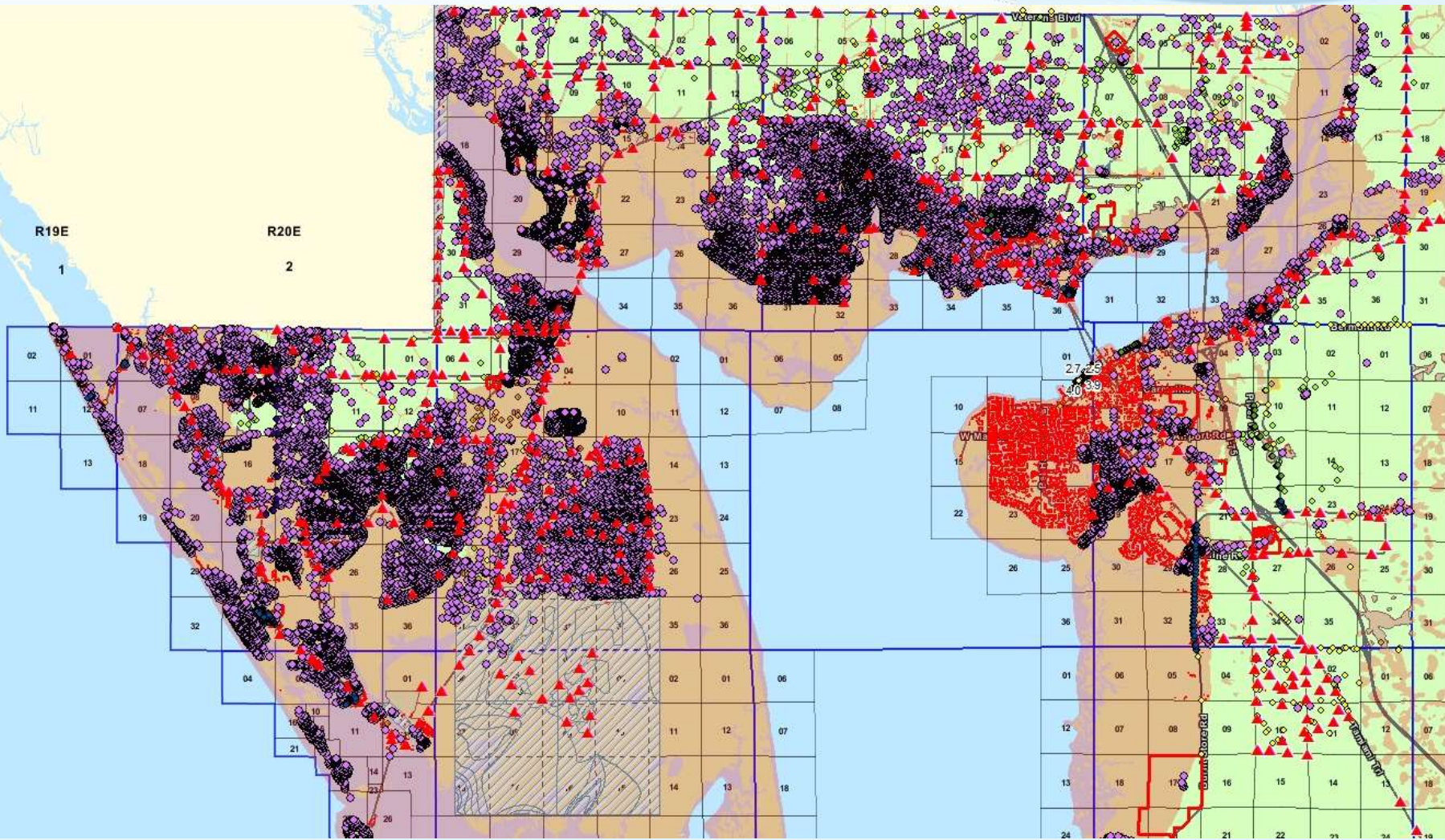
Private stormwater projects

Private developments



Result

100,000+ elevation data points on a GIS layer





Results (we hope)

Ensure topographical data is based on local information

Data is verified and accurate

Data is being built on for future projects

End result will be better maps that are easier to explain to the public

Reduction in costly challenges and appeals



Questions?

Claire Jubb CFM AICP

Community Development Director

Charlotte County Board of County
Commissioners

941.743.1241

Claire.jubb@charlottecountyfl.gov