

# Success with CRS: Lessons from Class 2 Communities

Dennis Dixon, CFM – CRS Coordinator, Pierce County, WA

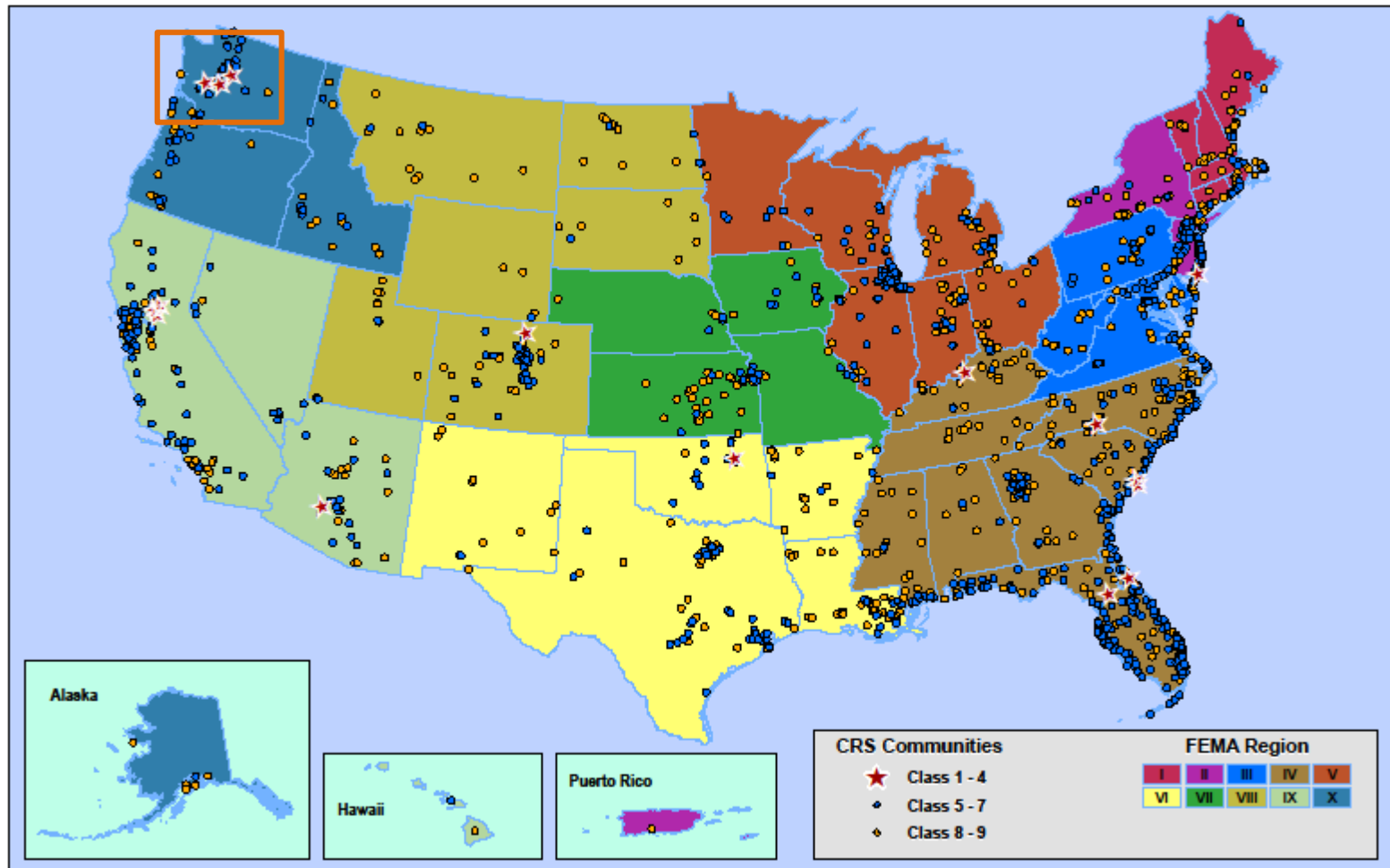
Mitch Paine, CFM – CRS Coordinator, King County, WA



# Washington success story

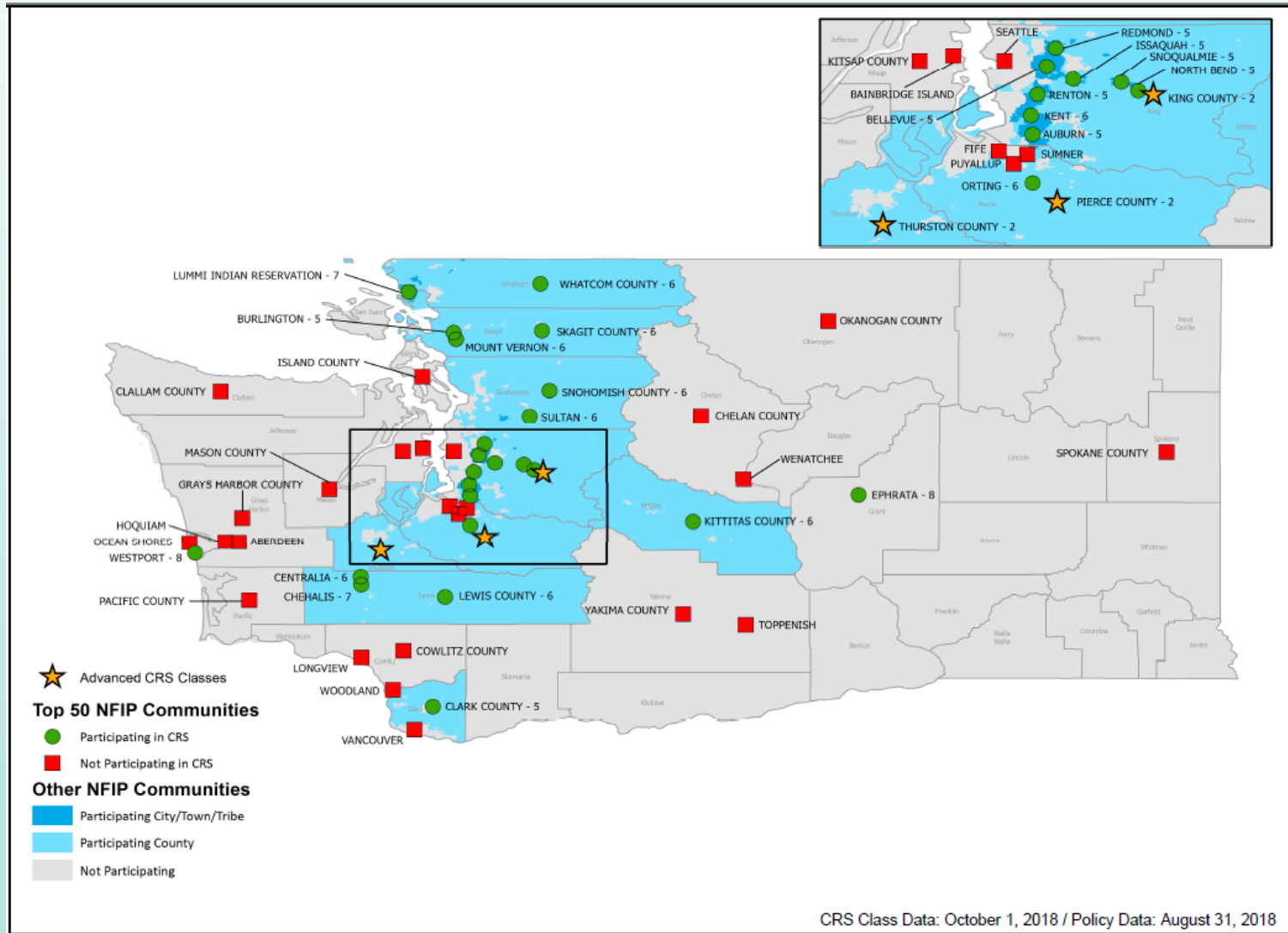
## National Flood Insurance Program (NFIP) Community Rating System (CRS)

October 2018



# Class 2 for Thurston, Pierce, and King Counties

## 4.9 class average for Puget Sound communities



# Someone else did the heavy lifting

- **340 Hazard Disclosure**
  - State disclosure requirements
- **420 Low Density Zoning**
  - State growth management act
- **430 Higher Regulatory Standards**
  - State floodway prohibitions
  - Endangered Species Act compliance -Biological Opinion for Puget Sound
  - Compensatory storage
  - State adopted 2015 I-Codes with 1 foot freeboard
- **440 Flood Data Maintenance**
  - State maintained GPS CORS network
- **450 Stormwater Management**
  - State implemented Clean Water Act / NPDES Manual for Watershed master plans & SWM regulations
- **630 Dams**
  - State Dam Safety credit

**Adds up to over 1,100 points**

# Teammates



# CRS Users Groups

- **Northwest Regional Floodplain Management Association CRS Users Group**
  - Hosted by Dennis Dixon, quarterly call in/in-person meeting in Tacoma
  - Training presentations and discussion on communities' programs
- **King County CRS Users Group**
  - Hosted by Mitch Paine, quarterly in-person meeting, rotates among CRS communities
  - Training presentations
  - Coordination on specific activities (330, 370, 510, 610, etc)
  - Field trips

# Pierce & King CRS History

King County joined -  
10/1/1991

1991 - Class 9

1992 - Class 8

1996 - Class 6

2001 - Class 4

2005 - Class 3

2007 - Class 2

2014 - 350 points above Class 2

Pierce County joined -  
10/1/1995

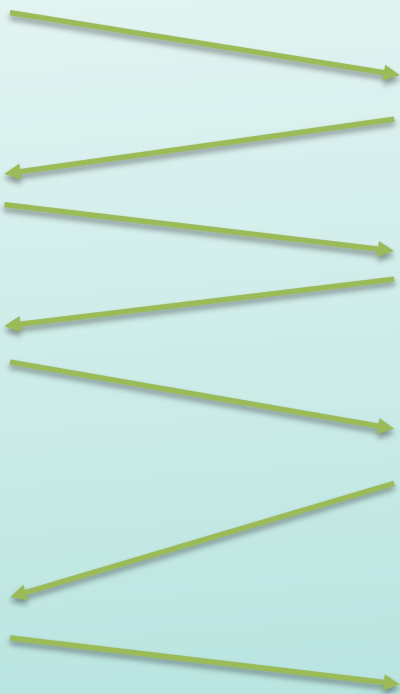
1995 - Class 7

1999 - Class 5

2002 - Class 3

2009 - Class 2

2014 - 1,300+ points above Class 2



# Class 1?

- Not likely; points are there, but prerequisites are difficult
- 370 Insurance requirements
- Must obtain credit for Levees - 620 and Dams - 630
- Coastal floodplains – regulations must reflect sea level rise
  - Puget Sound sea level rise predicted to be ~5 feet

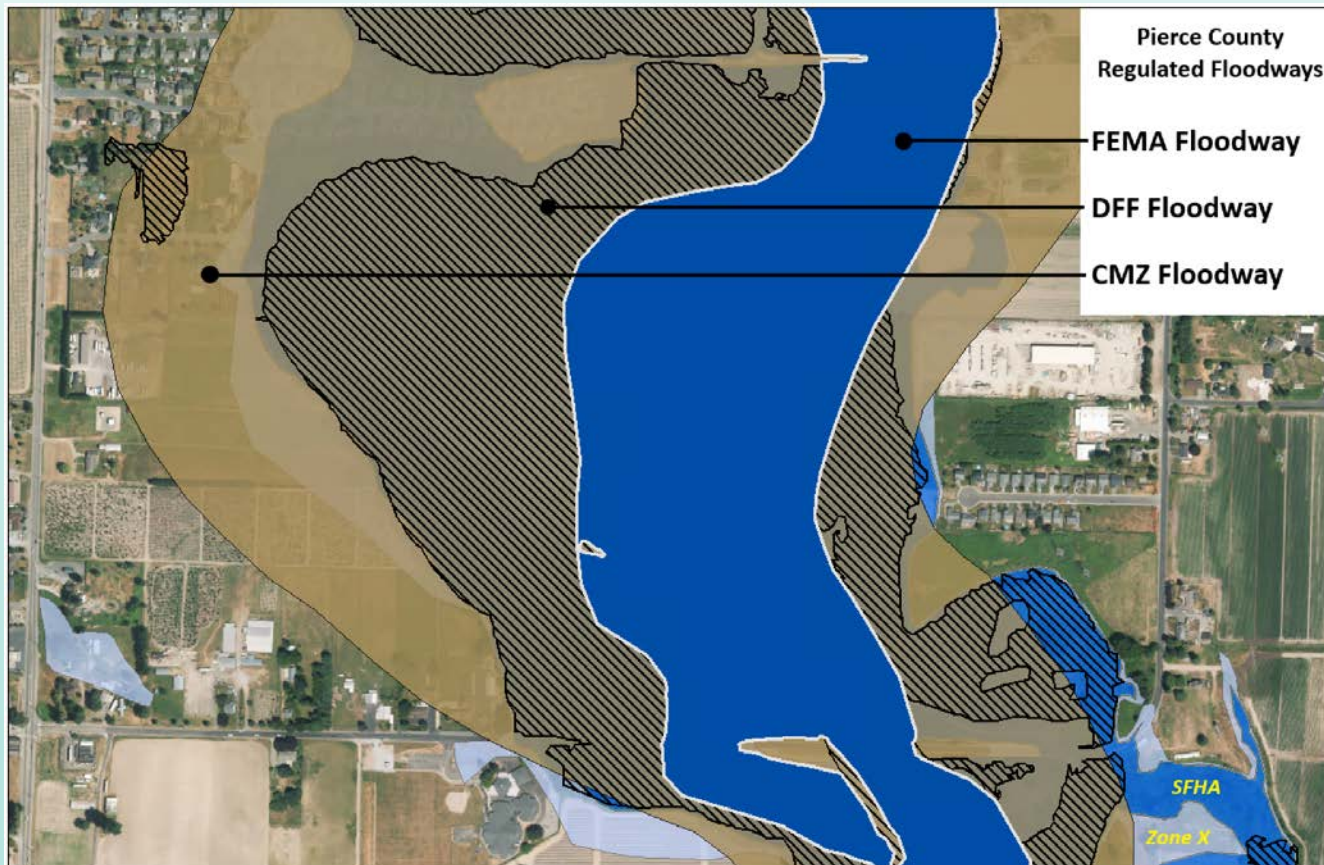


**A BRIDGE TOO FAR**



# Activities we're proud of:

- 430 Higher Regulatory Standards
  - Extended/additional floodway definitions
  - Erosion (CMZ) & Life Safety (DFF)



# Activities we're proud of:

- **450 Stormwater Management**
  - Washington compliant NPDES Manual
- **510 Floodplain Management Planning**
  - Flood plans in addition to HMPs
- **520 Acquisition & 530 Flood Protection**
  - King County has elevated nearly 80 homes since 2000 including 45 repetitive loss properties
  - Pierce County has removed 398 floodplain homes including 35 of 61 repetitive loss properties

# Lessons Learned

- **Bring your CRS program in-house**
- **Coordinate and befriend your permitting staff**
  - Since higher regulatory standards are so high, very few ECs are reviewed
  - Pierce County: 7 ECs in SFHA (2014-2018)
    - With 7,600 building permits during that same period
  - King County: 16 ECs in SFHA (2014-2018)
  - All ECs had CRS “gig” review issues

# Lessons Learned

- Don't forget about prerequisites:
  - Repetitive loss
  - BCEGS (Class 6, Class 4)
  - Freeboard – across all flood zones
  - Natural floodplain functions areas
  - Life safety (600 series) credits:
    - 610 points
    - 620 inventory/map of levees
    - 630 inventory/map of dams



# Lessons Learned

- **Maximize your impact adjustment ratio for 430**
  - Pierce County: Maximum 1.5 less open space credit
  - King County: Maximum 1.1 less open space credit
- **Outreach – RL outreach**
  - Meaningful AND CRS compliant
- **Activity 540**
  - Channel Debris Removal (CDR) easier for smaller communities

# Why do we do CRS?

- Supports our vision of a resilient and sustainable community
- The organized data is used for many other purposes
- National recognition helps create goodwill and a track record that can influence grant awards
- Elected officials tout CRS



# Why do we do CRS?

- Gives a deadline to do the things we want to do but otherwise might not get to:
  - emergency drills
  - outreach campaigns
  - consolidating emergency plans
- Keeps permitting agencies focused on floodplain management
- Helps us with the Corps and levee maintenance programs



An aerial photograph of a wide river valley. The river flows from the top left towards the bottom center. The valley floor is a mix of green fields, some residential areas, and a large, light-colored area that appears to be a construction site or a large parking lot. In the background, there are rolling hills and a large, prominent mountain with a snow-capped peak under a clear blue sky.

**Questions?**

**Mitch Paine –**

**[mpaine@kingcounty.gov](mailto:mpaine@kingcounty.gov)**

**Dennis Dixon –**

**[dennis.dixon@piercecountywa.gov](mailto:dennis.dixon@piercecountywa.gov)**