

HILDALE FLOODING

2 Years Later



















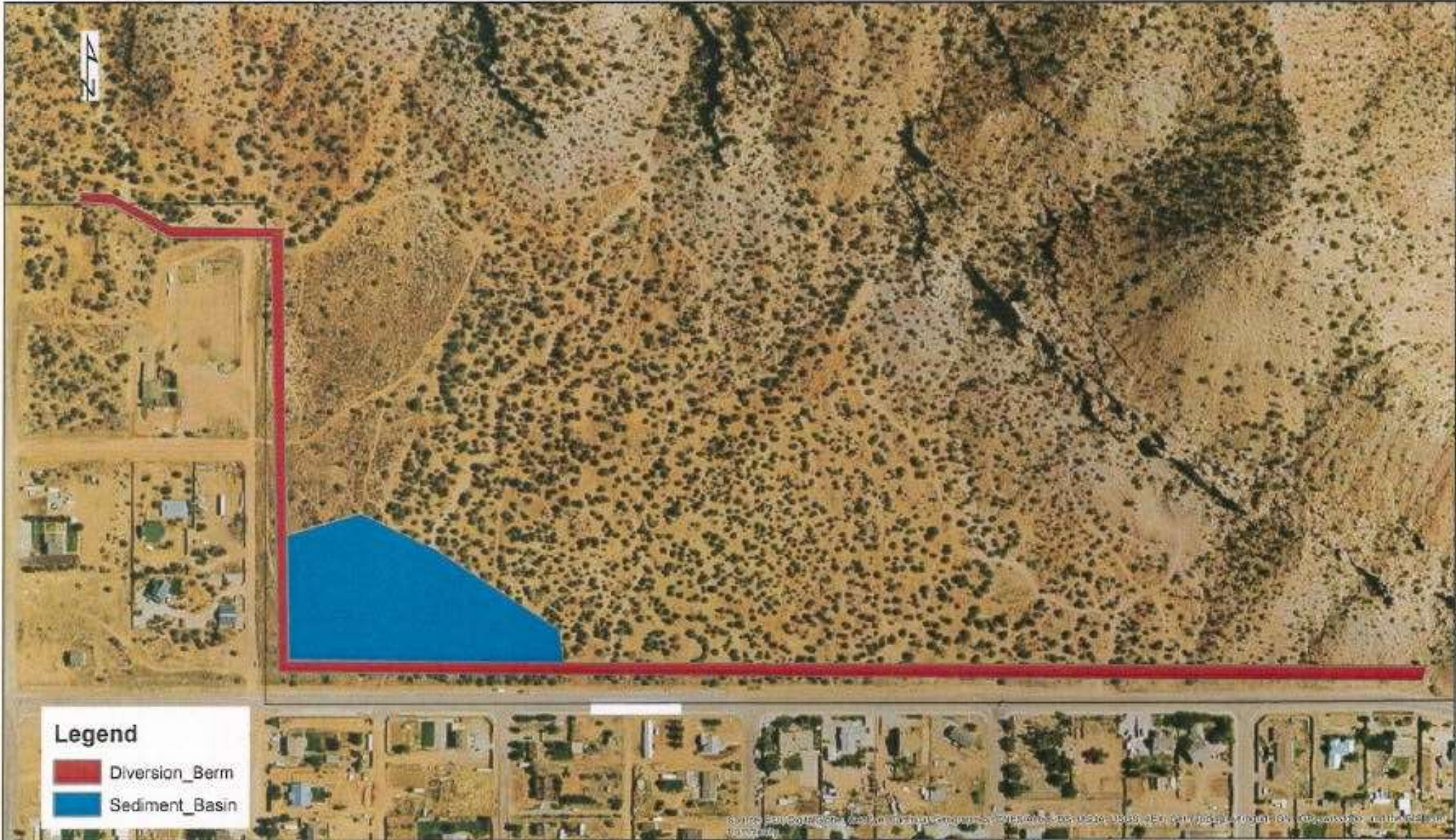
11/12/2014 10:24:30 AM C:\Users\jason\Desktop\Projects\2014\11\12\14\11121401\11121401.dwg

PROJECT SITE MAP



11 NORTH 300 WEST
WASHINGTON, UT 84790
TEL 435.652.8450 - FAX 435.652.8416
www.sunrise-eng.com

Hildale EWP



Legend

- Diversion_Berm
- Sediment_Basin

